

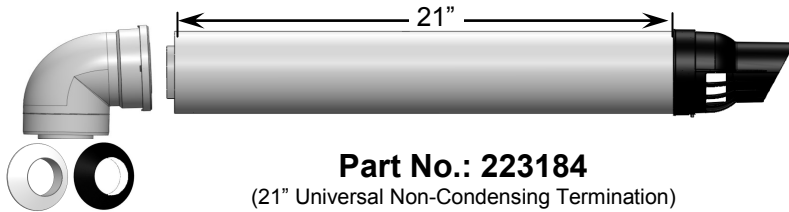
Ubbink Vent Components - Concentric Non-Condensing

- For concentric venting, non-condensing models.
- Current water heater models incorporate a condensate collector and do not require an “adapter” vent component. (For models manufactured prior to 2008 a separate condensate collector is available)
- Plastic vent components consist of an outer plastic vent for the air intake (Ø5”) and an inner metal vent for the exhaust gases (Ø3”). Metal vent components consist of metal inner and outer vents.
- Plastic and metal vent components are completely interchangeable.

Refer to the Rinnai Installation Manual and the Ubbink installation instructions for complete installation details and requirements.

PLASTIC VENT COMPONENTS

Part No.: 223182 (21” Universal Non-Condensing Termination Kit)

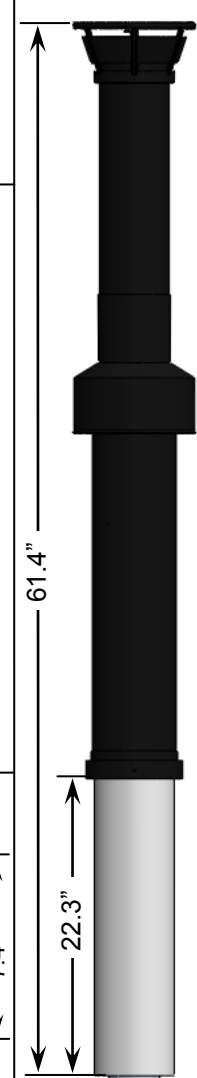


Part No.: 223184
(21” Universal Non-Condensing Termination)

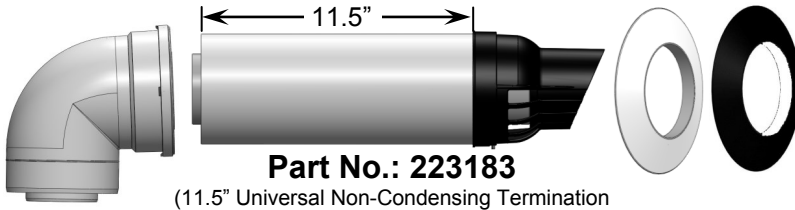
Roof Termination
Extension Kit
Part No.: 185342



Roof Discharge Termination
38”
(Cold Climate)
Part No.: 184119

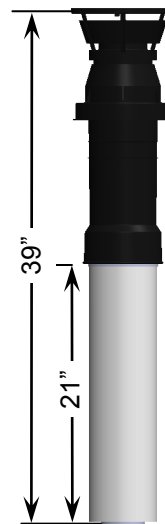


Part No.: 223181 (11.5” Universal Non-Condensing Termination Kit)



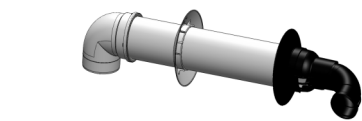
Part No.: 223183
(11.5” Universal Non-Condensing Termination)

Roof Discharge Termination 18”
Part No.: 184118-S



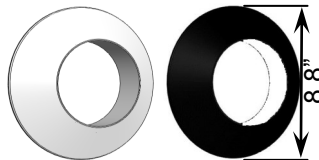
61.4”

22.3”



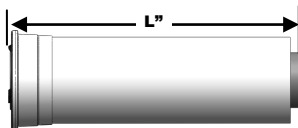
(21” Non-Condensing Horizontal Termination
Kit)

Part No.: 223187



Rubber Wall Plate

Part No.: 710342 (White)
Part No.: 710602 (Black)



Telescoping Vent
Length
Part No.: 224054

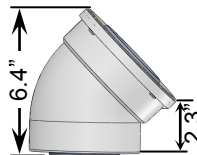


Effective
Length
2.2-12 Inches

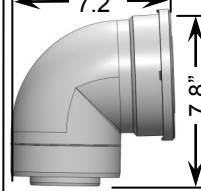
Vent Pipe Extension

Length “L”	Part Number
10”	224051
19.5”	224052
39”	224053

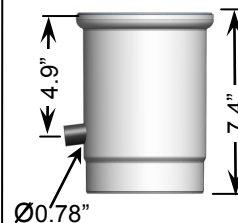
45 Degree Elbow
Part No.: 224050



90 Degree Elbow
Part No.: 224063



Condensate Collector
Part No.: 224069

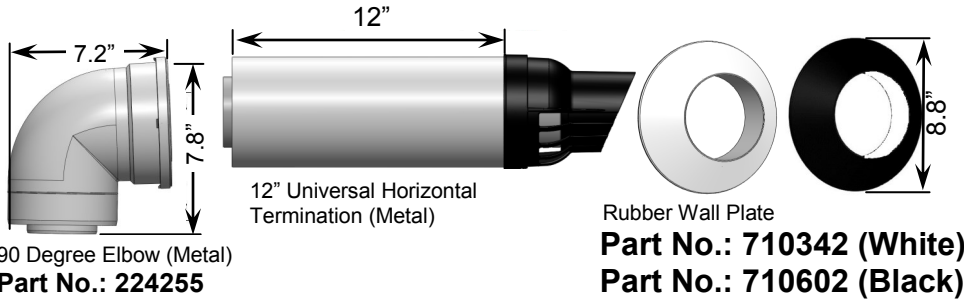


Ubbink Vent Components - Concentric Non-Condensing

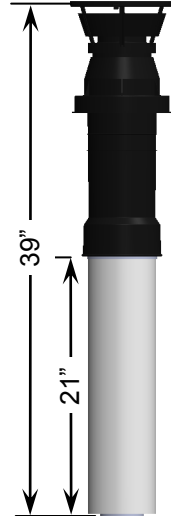
METAL VENT COMPONENTS

Universal Termination Kit (Metal)

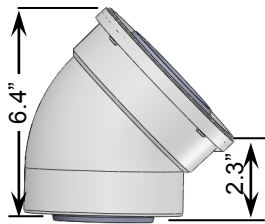
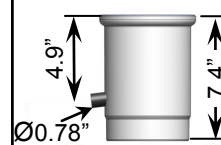
Part No.: 223188



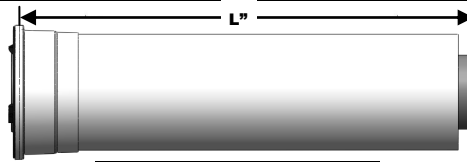
Roof Termination (Metal)
Part No.: 184127



Condensate Collector (Metal)
Part No.: 224245

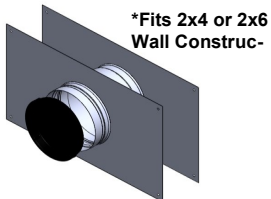


45 Degree Elbow (Metal)
Part No.: 224250



Length "L"	Part Number
10"	224260
19.5"	224265
39"	224270

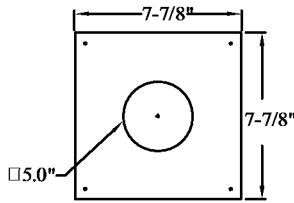
ACCESSORIES



*Fits 2x4 or 2x6
Wall Construc-

Thimble

Part No.: 224045

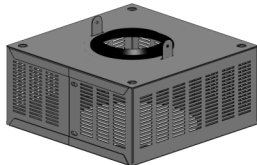


Metal Pass Through Plate
Part No.: 224097

Roof Flashing

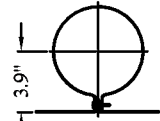


Roof Pitch	Part No. for Shingle Roofs	Part No. for Tile Roofs
1/12 to 6/12	189950	50171949
6/12 to 12/12	189951	50171961
8/12 to 16/12	189952	50171954



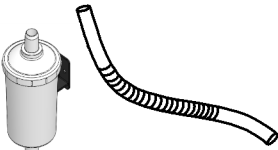
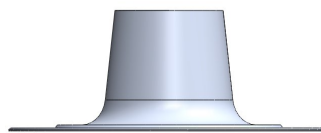
Universal Bug Guard
Part No.: 224042

*Included with Roof

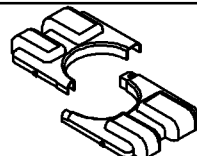


Pipe Clamp
Part No.: 169044

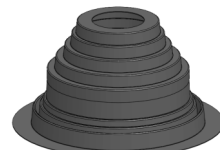
Roof Flashing—Flat
Part No.: 146141



Condensate Trap
Part No.: 222053

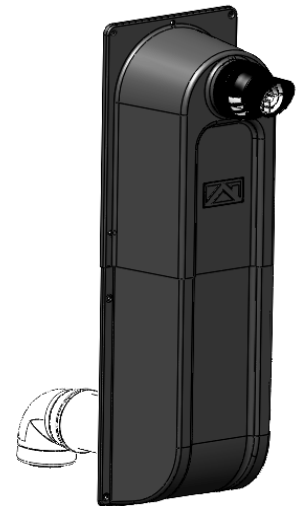


NSF Cover
Part No.: 224040



Flashing for Metal Roof
Part No.: 242141

Raised Horizontal Termination Kit "Snorkel"
Part No.: 224046



Kit Includes:
14.2" Vent Extension, Qty 3-90° Elbow,
19.5" Vent pipe extension, Special wall
terminal, Cover.

Rinnai America Corporation • 103 International Drive, Peachtree City, GA 30269

Toll-Free: 1-800-621-9419 • Phone: 678-829-1700 • www.rinnai.us

©2013 Rinnai America Corporation. Rinnai is continually updating and improving products; therefore, specifications are subject to change without prior notice. Local, state, provincial, federal and national fuel gas codes must be adhered to prior to and upon installation.